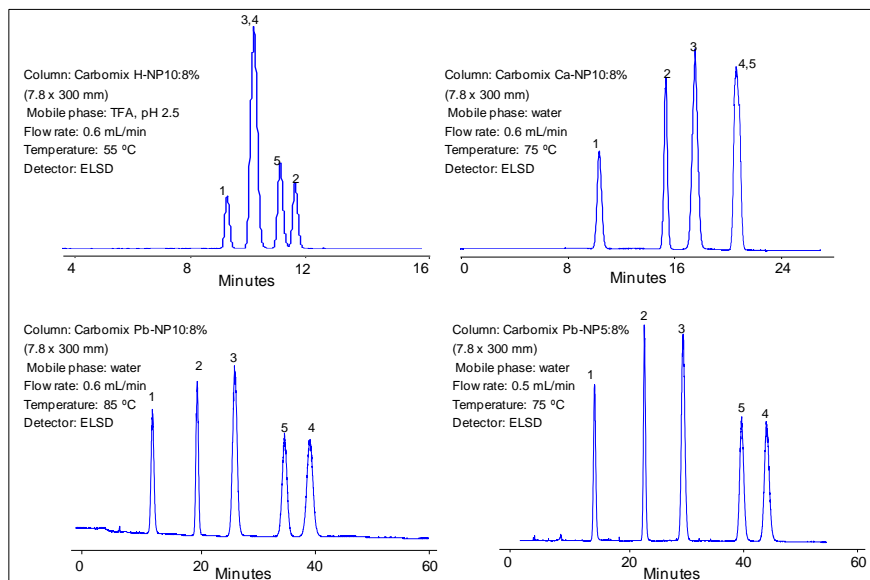




Analysis of sugar and sugar alcohol mixture on Carbomix[®] H/Ca/Pb (7.8x300 mm)



Conditions indicated on Figures

Samples: 1. glucose; 2. Erythritol; 3. Mannitol; 4. Sorbitol; 5. Xylitol

Keywords: Carbohydrate, Carbomix, ELSD, glucose, erythritol, mannitol, sorbitol, xylitol, ionic form